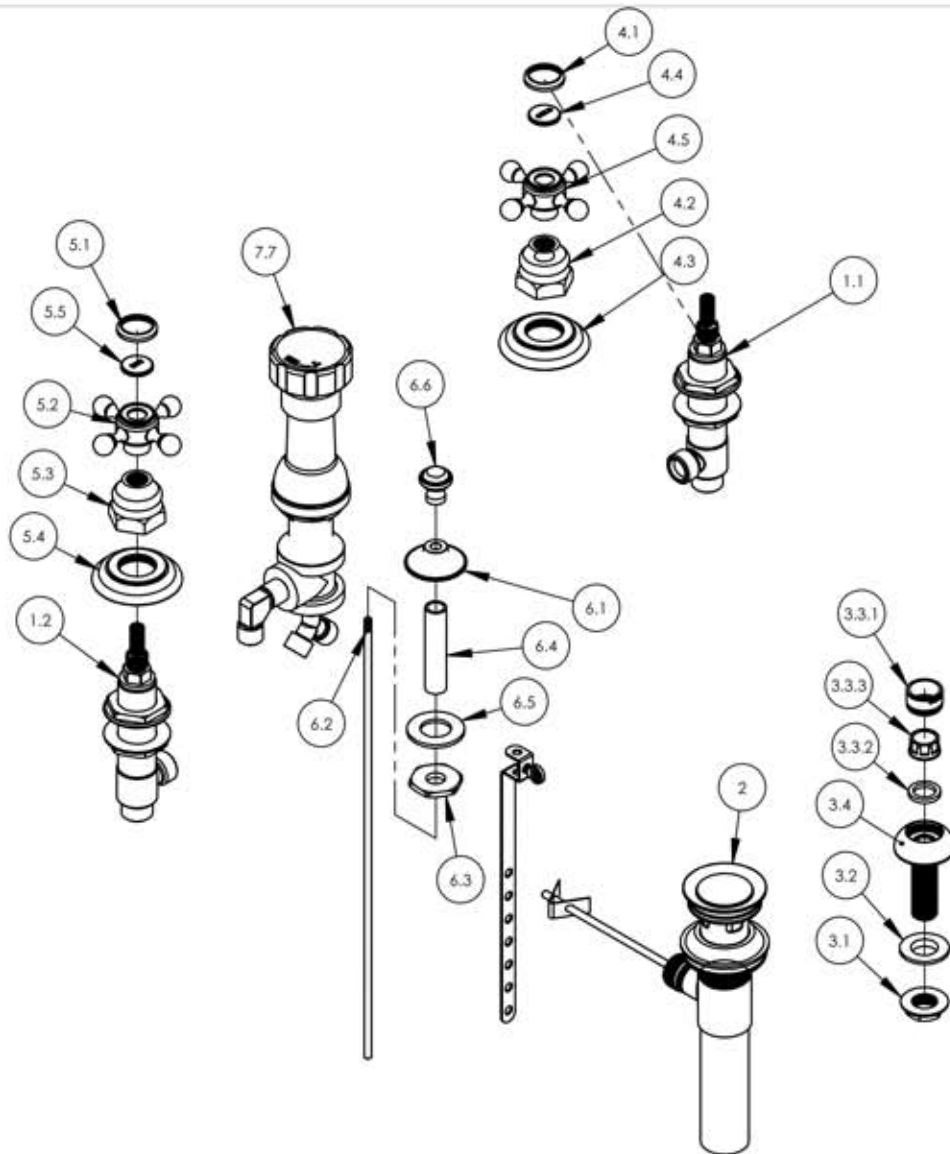


A

B

C

D



ITEM NO.	PART NUMBER	DESCRIPTION	QTY.
1	1-600	WIDESPREAD HOT AND COLD VALVES W/PLASTIC NUTS	1
1.1	1-109	WIDESPREAD VALVE COLD LAV 16PT	1
1.2	1-110	WIDESPREAD VALVE HOT LAV 16PT	1
2	3-046/00	POP-UP DRAIN ASSEMBLY (2-101, 2-102)	1
3	3-085/00	ASSY, BIDET SPRAYER	1
3.1	10844	NUT FOR DOUCHE SPRAYER	1
3.2	90512	GASKET SEAL, SPRAYER	1
3.3	3-059/00	AERATOR, 15/16" MALE HOUSING	1
3.3.1	30032/00	AERATOR HOUSING 15/16" MALE HOUSING	1
3.3.2	30030	RUBBER SEAL WASHER AERATOR	1
3.3.3	Default	AERATOR DROP-IN INSERT 2.2 GPM	1
3.4	P09016_1	HEAD, SPRAY BODY	1
3.5	P09016_8	NIPPLE, SPRAY BODY	1
4	3-141C/00	CROSS HANDLE, HEX TRADITIONAL, 500 SERIES	1
4.1	10538/00	CAP RING FOR 500 SERIES BUTTON	1
4.2	10621/00	BASE HUB NUT	1
4.3	10619/00	ESCUTCHEON, TRADITIONAL LAV 1"-20	1
4.4	11098	PLASTIC BUTTON, COLD	1
4.5	2-180/00	SUB ASSY. CROSS HANDLE HUB	1
5	3-141H/00	CROSS HANDLE, HEX TRADITIONAL, 500 SERIES	1
5.1	10538/00	CAP RING FOR 500 SERIES BUTTON	1
5.2	2-180/00	SUB ASSY. CROSS HANDLE HUB	1
5.3	10621/00	BASE HUB NUT	1
5.4	10619/00	ESCUTCHEON, TRADITIONAL LAV 1"-20	1
5.5	11099	PLASTIC BUTTON, HOT	1

E

ALL	A	-UPDATED DRAWING FOR BETTER CLARITY	11/4/2015	GRE
ZONE	REV.	DESCRIPTION	DATE	APPROVED

REVISIONS

1261 LOGAN AVENUE
COSTA MESA, CALIFORNIA 92626
PHONE: 714.361.4800
FAX: 714.617.3120

PHYLORICH®

Defining Luxury Since 1959

PROPRIETARY AND CONFIDENTIAL

THE INFORMATION CONTAINED IN THIS DRAWING IS THE SOLE PROPERTY OF RISS MANUFACTURING. ANY REPRODUCTION IN PART OR AS A WHOLE WITHOUT THE WRITTEN PERMISSION OF RISS MANUFACTURING IS PROHIBITED.

NEXT ASSY	USED ON	FRACTIONS ±1/64"	DECIMALS X.X: ±.1 X.XX: ±.01 X.XXX: ±.005	ANGULAR ±.5°
APPLICATION				
MATERIAL			NAME	DATE
FINISH		DRAWN	LLO	11/4/2015
DO NOT SCALE DRAWING		CHECKED	GRE	

INTERPRET GEOMETRIC DIMENSIONING & TOLERANCING IN ACCORDANCE WITH ASME Y14.5-2009 & ASME Y14.41-2003 STANDARDS. UNLESS OTHERWISE SPECIFIED, DIMENSIONS ARE IN INCHES. TOLERANCES ARE:

FOUR HOLE BIDET SET, CROSS HANDLES, HENRI SERIES

SIZE **A** ASM/PRT NO. 161-60/00 REV B

SCALE: 1:5 WEIGHT: lbs. SHEET 1 OF 2

5

4

3

2

1